

DIESEL TREAT



Diesel Conditioner & Anti-Gel

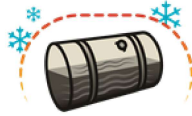
Safe, effective and loaded with the latest and greatest, performance enhancing technology, Diesel Treat is also the best solution to fight gelling in colder climates. Designed to solve the problems created by today's ULSD fuel, Howes Diesel Treat is the leading treatment solution for diesel engines. From truckers to farmers, pick ups to diesel automobiles, Howes Diesel Treat corrects the inherent problems that exist in the current ULSD fuel..

WHERE TO BUY



BULK

FEATURES & BENEFITS



Prevents Fuel From Gelling

Howes Diesel Treat is the nation's most trusted anti-gel. Tested and proven to prevent gelling in even the coldest weather, diesel owners choose the Howes family's time tested and proven formula to keep them going.



Adds Lubricity

Howes Diesel Treat provides increased lubricity to injectors, pumps and upper cylinders, adding to engine performance and life with today's Ultra Low Sulfur Diesel (ULSD) fuels.



Removes Water

Many products emulsify or disperse water and frequently use alcohols or solvents that can do damage to your engine. Howes Diesel Treat is a premium petroleum based product that demulsifies water, safely removing it from diesel fuel. It contains no alcohol or other harmful solvents, making it warranty safe for all diesel emission systems.

- Cleans and lubricates fuel injectors
- Safe and effective in all diesel and biodiesel fuels
- Eliminates smoking and rough idle
- Particulate filter friendly and warranty safe

SAFE TO USE IN THESE FUEL SYSTEMS



Trucks



Tractors



Construction



RV



Treatment Ratios

Part #	Size	*Above 0° F	*Below 0° F
I03064	15 oz.	1 oz. to 5 gal.	1 oz. to 2.5 gal.
I03062	1 quart	1 oz. to 5 gal.	1 oz. to 2.5 gal.
I03060	1/2 gal.	1/2 gal. to 320 gal.	1/2 gal. to 160 gal.
I03068	55 gal. drum	1 gal. to 640 gal.	1 gal. to 320 gal.
I03089	275 gal. tote	1 gal. to 640 gal.	1 gal. to 320 gal.

* Cars/Pickups/Tractors double dose both treatment ratios

[LEARN MORE](#)

[VIDEO HIGHLIGHT](#)